



Quick Installation Guide
SAXTA Data Node
Win32 Packaging

Review History

Date	Author	Comments
03/29/2007	Bruno Margerin	First Draft
03/30/2007	Bruno Margerin	Inserted Figures.
04/01/2007	Bruno Margerin	Reviewed
04/02/2007	Heather Weir	Reviewed in Details
04/02/2007	Bruno Margerin	Implemented Heather's review.
08/28/2007	Bruno Margerin	Updates related to version 1344
08/12/2007	Bruno Margerin	Updates related to Saxta version 1350
08/14/2007	Bruno Margerin	Updates related to Saxta version 1365
11/13/2007	Bruno Margerin	Updates related to Saxta version 1377

Contents

1	<i>What is SAXTA?</i>	3
2	<i>Who sponsors SAXTA</i>	3
3	<i>What do I need to run it ?</i>	3
4	<i>Is SAXTA ready for prime time?</i>	3
5	<i>Where do I get SAXTA?</i>	3
6	<i>How do I install it?</i>	3
7	<i>How to I start using it?</i>	4
7.1	Starting SAXTA	4
7.2	Configuring SAXTA	5
8	<i>How do I de-install it?</i>	6

Table of Figures

Figure 1: SAXTA logging console: successful deployment	4
Figure 2: The SAXTA Settings Section.....	5

1 What is SAXTA?

SAXTA is a free Landsat and Aster data dissemination tool, providing its user community with the ability to unify individual data holdings into a community managed and maintained archive. Each individual retains control of his/her own data, to expand or withdraw the data one contributes to the community at any time.

In short, with SAXTA, the community is the archive.

Please visit our web site <http://saxta.geog.umd.edu> or contact us at SaxtaHelp@ssaihq.com if you'd like more information.

2 Who sponsors SAXTA

SAXTA funding comes from a 2002 NASA REASoN CAN award.

3 What do I need to run it ?

This document deals only with the installation of SAXTA in Microsoft Windows 2000, XP and Vista O.S. The default Win32 implementation requires about 30 Mbytes of RAM, as well as, 170 Mbytes of disk. SAXTA also needs port 8484, 9700 and 9701 to be available. If some of the ports are unavailable on your machine, contact us at SaxtaHelp@ssaihq.com and we'll guide you through SAXTA's advanced configuration to accommodate your specific requirements.

If you'd like to install SAXTA on another platform, start by downloading the "All platforms" "SAXTA V1 Beta Testing Edition" SAXTA package from <http://saxta.geog.umd.edu/download.html>. Its corresponding installation guide can also be found at <http://saxta.geog.umd.edu/download.html>. Again, if you have difficulties, feel free to contact us.

4 Is SAXTA ready for prime time?

SAXTA is currently in Beta, and is not yet tested nor packaged for general distribution. SAXTA actively seeks user feedbacks in order to mature to a finished product that the community actually would like to use. Remember, SAXTA is being developed for you, and we need your help to make it the way you want it. Please let us know at SaxtaHelp@ssaihq.com.

5 Where do I get SAXTA?

You can download SAXTA free from its web site at <http://saxta.geog.umd.edu/download.html>. Select the Win32 distribution (`SaxtaV1Beta-win32-bxxxx.zip` where `xxxx` is the SAXTA build number (currently 1365)). SAXTA is also available free on CD. Requests can be made at SaxtaHelp@ssaihq.com.

6 How do I install it?

SAXTA is currently packaged as a self contained portable application. Installation consists of unzipping `SaxtaV1Beta-win32-bxxxx.zip` onto your hard disk. SAXTA is immediately ready for use.

7 How to I start using it?

It's a 3 stage process:

1. Start SAXTA.
2. Configure SAXTA to join the SAXTA community.
3. Join the SAXTA community.

7.1 Starting SAXTA

Go into the `SaxtaV1Beta-win32` directory, and you'll see 5 icons:

- A directory icon for the JAVA Development Toolkit (`jdk1.6.0`).
- Another directory icon named `Saxta`.
- A `GoToSaxtaSettings` Internet Shortcut icon.
- A `SaxtaLauncher.jar` launching application.
- A `StartSaxta.bat` starting script.

Double click on the `StartSaxta.bat` icon. A white console window appears: (See Figure 1) SAXTA has started. We currently left the logging console visible, as we think that it could be useful should we have to troubleshoot SAXTA with you. In the mean time, you can minimize it and save some screen real estate.

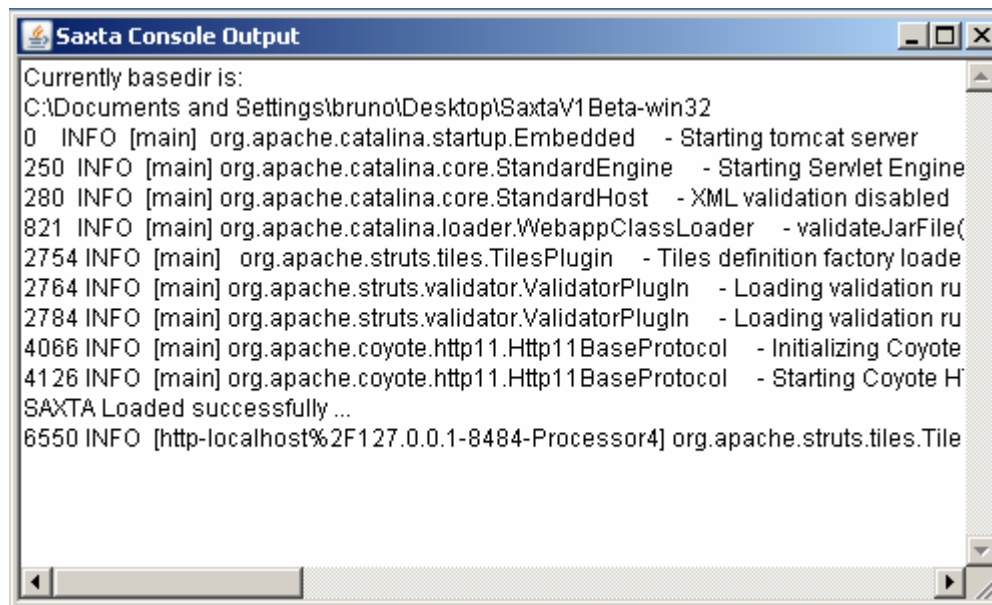


Figure 1: SAXTA logging console: successful deployment

SAXTA should also have opened a web browser to the SAXTA Settings Page. See Figure 2: The SAXTA Settings Section . If not you can open manual a browser by:

- Double click on the `GoToSaxta-Settings` Internet Shortcut icon located in the `SaxtaV1Beta-win32` directory, or
- Double click on this link: <http://localhost:8484/SaxtaV1Beta/Setting.do> , or
- Start your favorite browser and enter the following URL:
<http://localhost:8484/SaxtaV1Beta/Setting.do>

You should see the following Settings web page (See Figure 2)

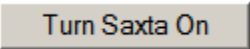


Figure 2: The SAXTA Settings Section

7.2 Configuring SAXTA

SAXTA comes pre-configured with sensible default settings, but *please* take the time to enter your own node name into the top first field: Create Your Own Node Name. (See Figure 2)

This will prevent having all SAXTA members being seen as “SaxtaDataNode”, and will also allow you to get some credit for the data you contribute to the community.

Click the  button to save your settings and join the SAXTA community.

The SAXTA platform status should changed from:

- Off, to
- Discovering Communities, then to.
- Found the SAXTA Community, Joining the SAXTA Community, and finally to
- Ready.

At that point you have fully joined the SAXTA community and are ready to search or disseminate data.

Note: *What do I do if I already have a jdk installed on my machine ?*

The SAXTA jdk does not interfere with the one that you have already installed in you machine.

However, if you have jdk 1.6 or higher, you can download the "All Plaforms" "SAXTA V1 Beta Testing Edition":

- By going to the SAXTA download page : (<http://saxta.geog.umd.edu/download.html>) and downloading the 14.8Mb zip file by clicking on the SAXTA V1 Beta Testing Edition" link, or
- By directly downloading it at:
<http://saxta.geog.umd.edu/downloads/SaxtaV1Beta-Default-b1365.zip>

Note: *What do I do if I already have a jdk and a Java web server installed on my machine?*

As long as you are not using port 8484, 9701 or 9700, both can co-exists as is. But you probably don't need the Win32 SAXTA packaging. Just download the "All platform" "Servlet Only" SAXTA package from <http://saxta.geog.umd.edu/download.html> and deploy it into your existing java web server. Contact us at SaxtaHelp@ssaihq.com if you are having some issues in getting that to work.

8 How do I de-install it?

SAXTA is a portable application, which is self contained within its own directory. To remove / de-install SAXTA, just make sure to shutdown SAXTA (close the black window console in which SAXTA runs), and delete the `SaxtaV1Beta-win32` directory.

If you downloaded some Aster or Landsat data via SAXTA, and you want to remove them as well, just delete the "My Documents\My SAXTA Holdings" directory or wherever you had SAXTA download your Aster and Landsat files into.